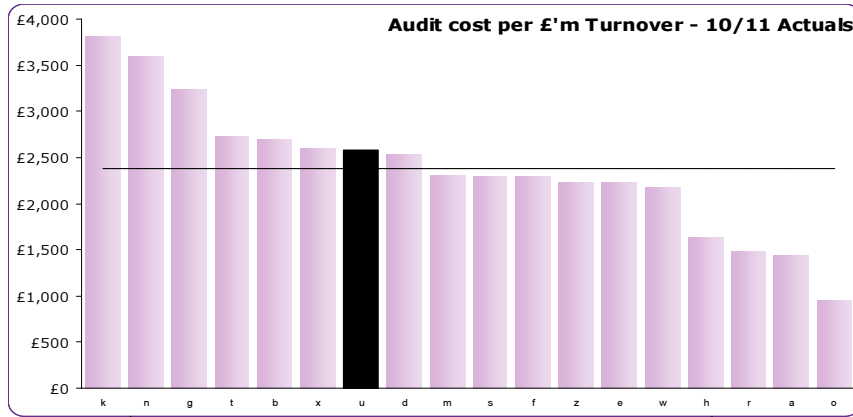


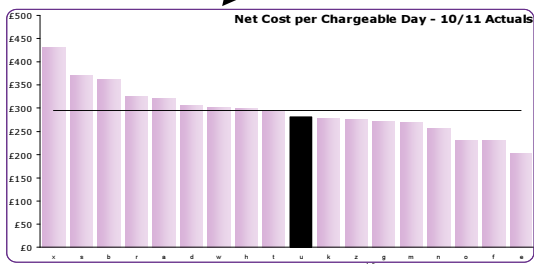
CIPFA Benchmarking Club Results 2010

COST ANALYSIS

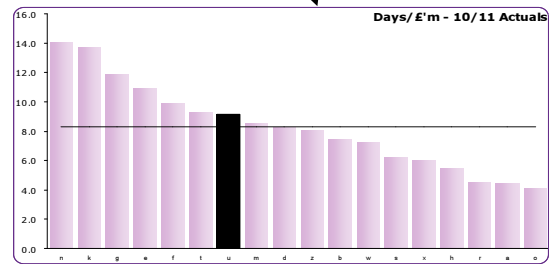


TBC £2575

Average £2380

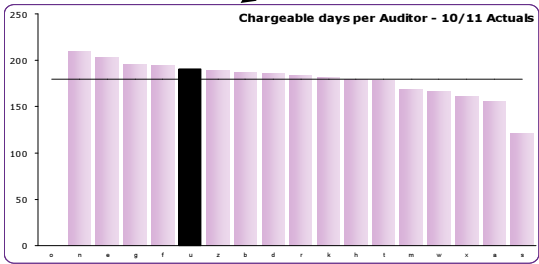


TBC £282 Average £295



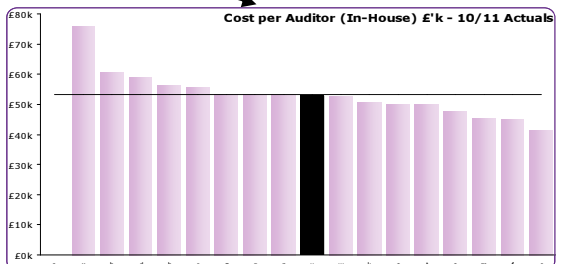
TBC 9.1

Average 8.3



TBC 190

Average 180



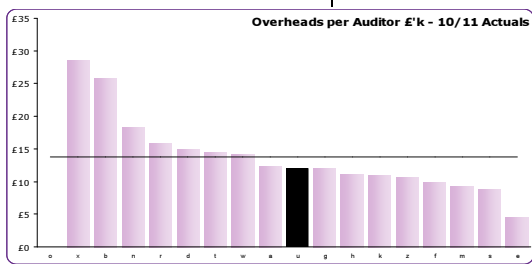
TBC 52.87k

Average 53.21



TBC £40.87

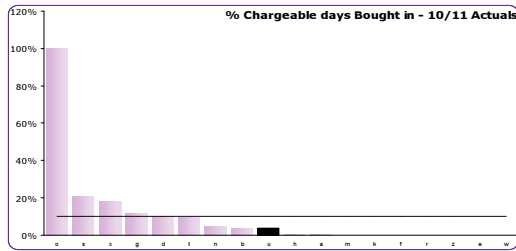
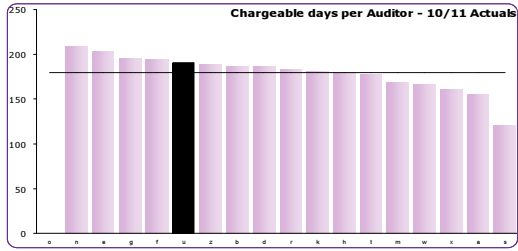
Average £39.45k



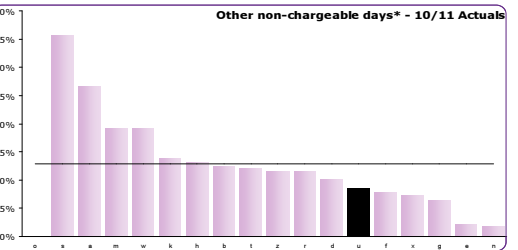
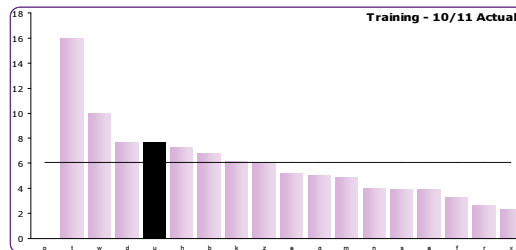
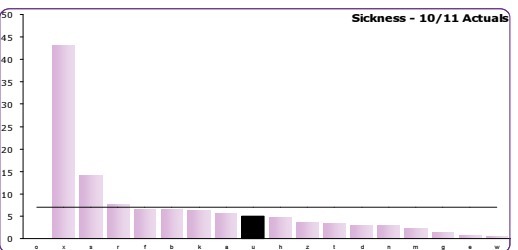
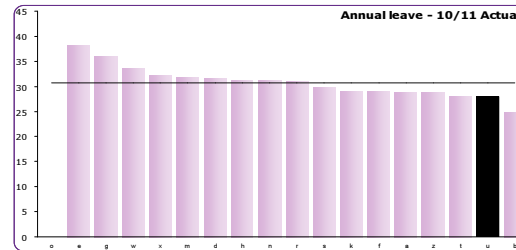
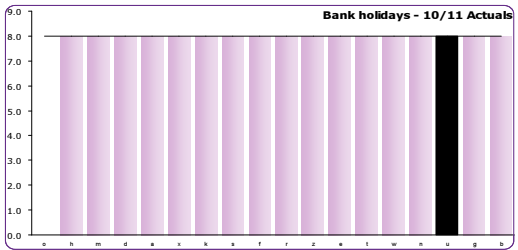
TBC £12.00 k

Average £13.76k

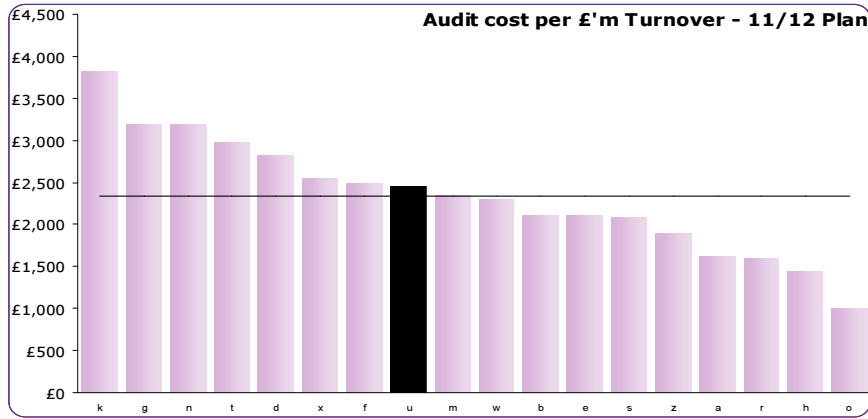
## CHARGEABLE DAYS PER AUDITOR



## NON-CHARGEABLE DAYS PER AUDITOR

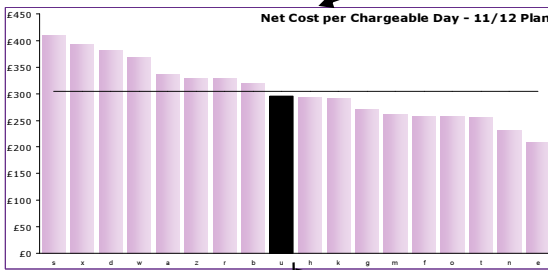


2011/12 PLAN - COST ANALYSIS

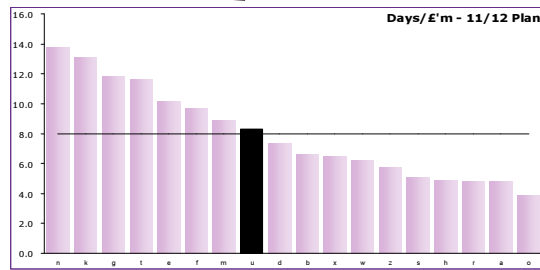


TBC £2455

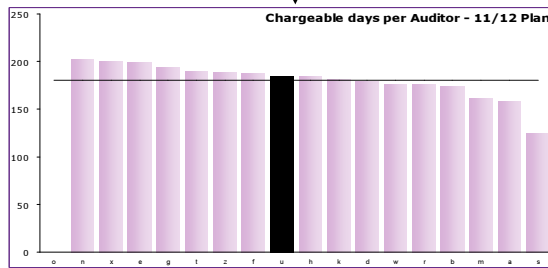
Average £2336



TBC £296 Average £305

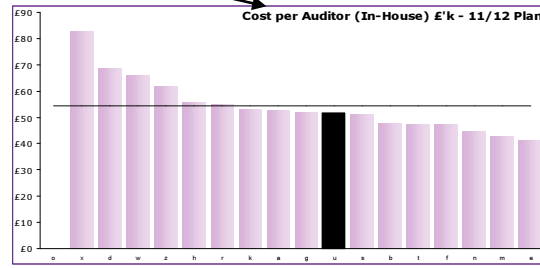


TBC 8.29 Average 7.97



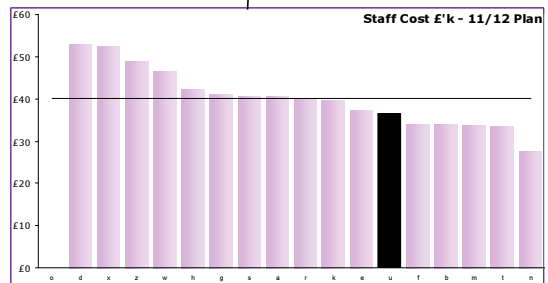
TBC 185

Average 180



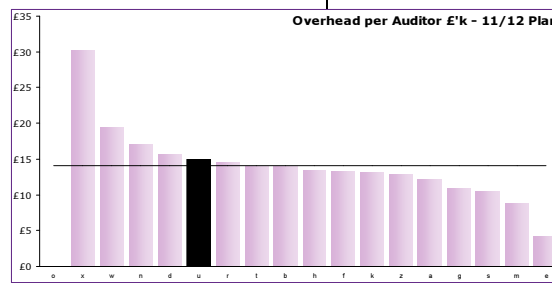
TBC £51.67k

Average £54.25K



TBC £36.67k

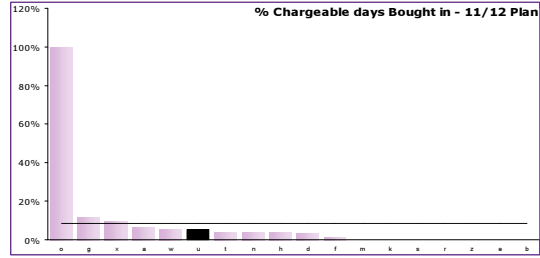
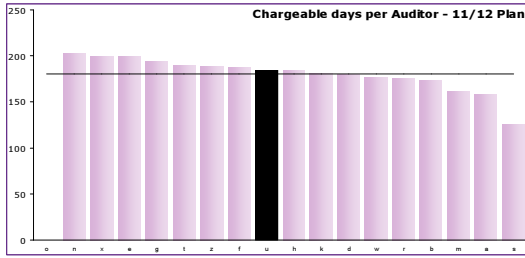
Average £40.15k



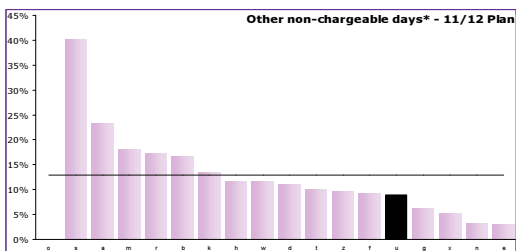
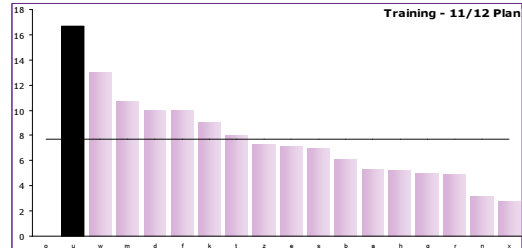
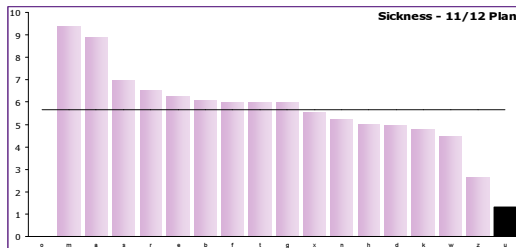
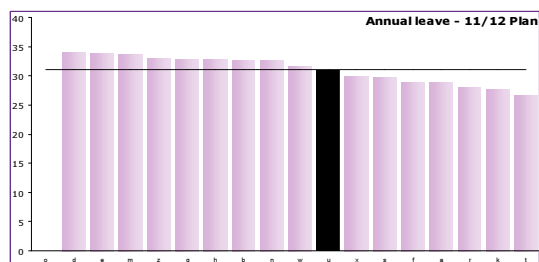
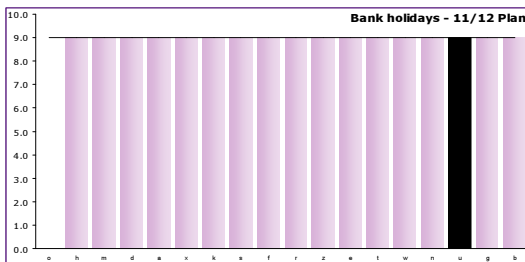
TBC £15.00K

Average £14.09K

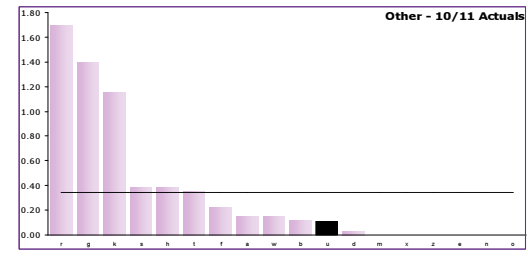
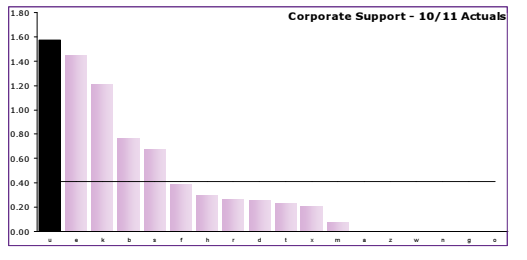
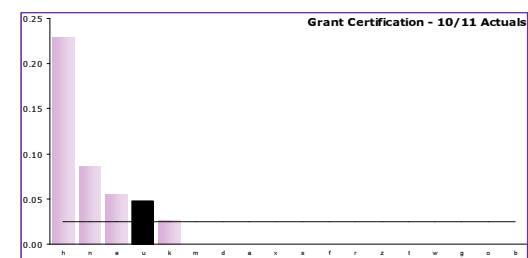
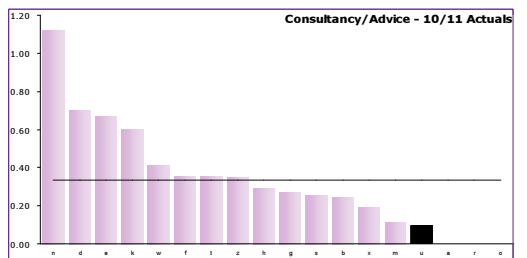
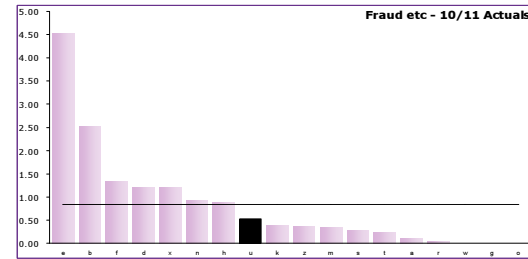
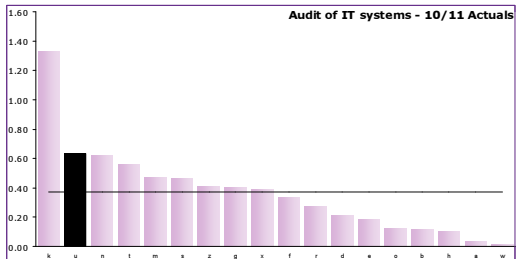
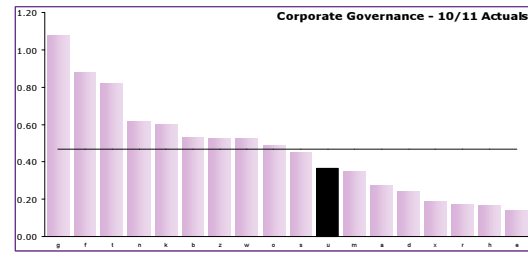
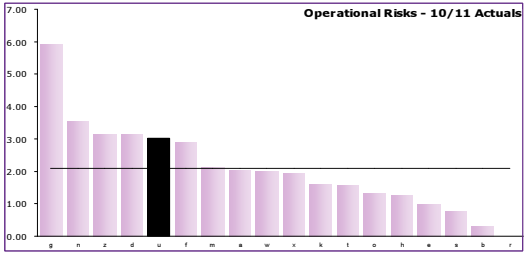
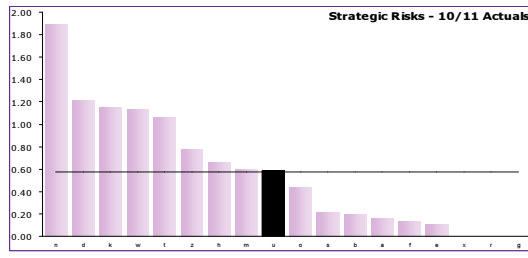
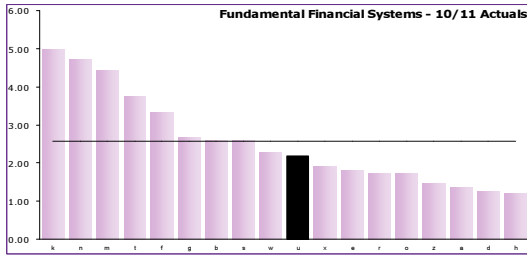
## CHARGEABLE DAYS PER AUDITOR



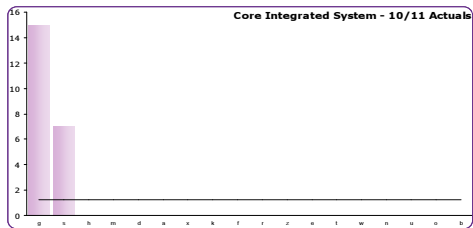
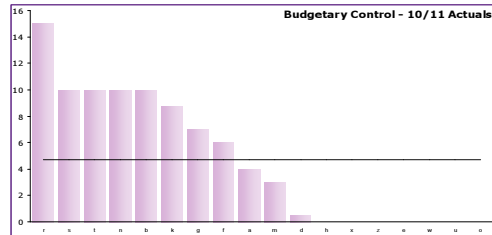
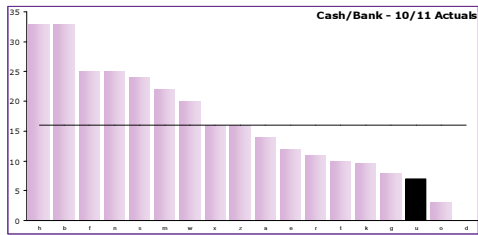
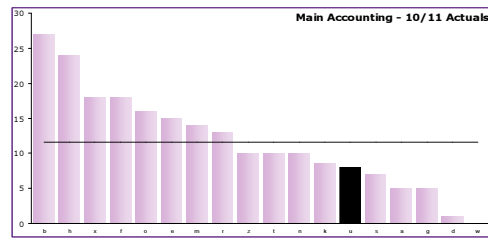
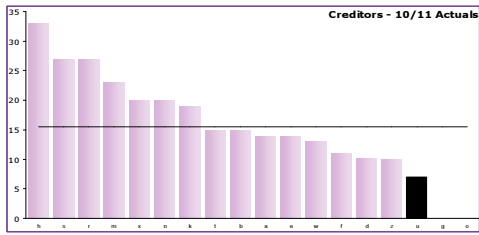
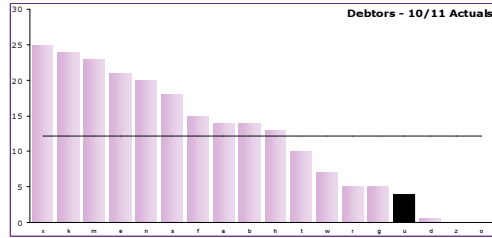
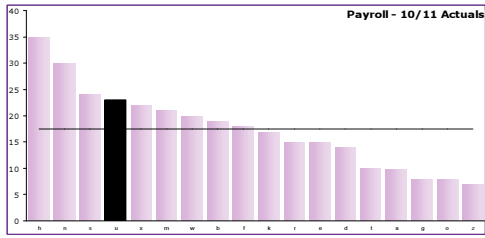
## NON-CHARGEABLE DAYS PER AUDITOR



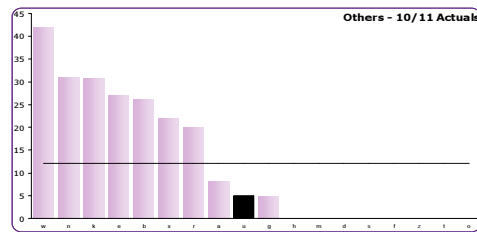
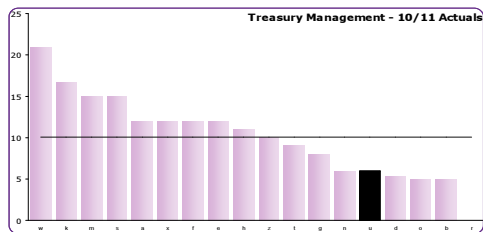
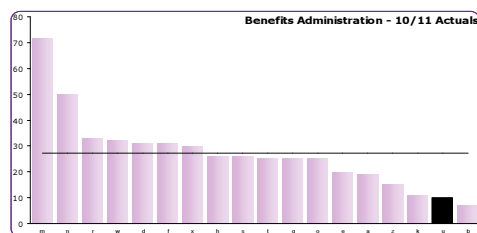
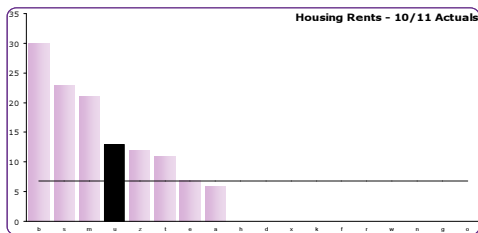
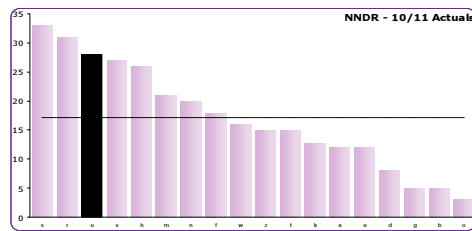
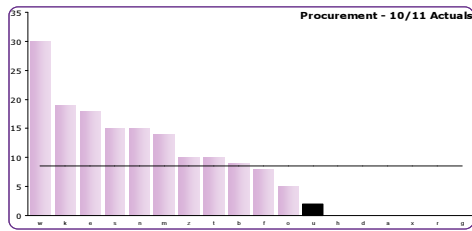
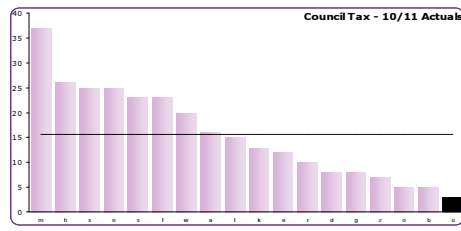
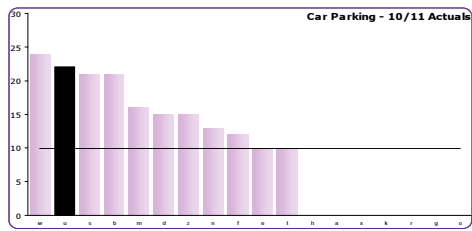
## AUDIT COVERAGE - 2010/11



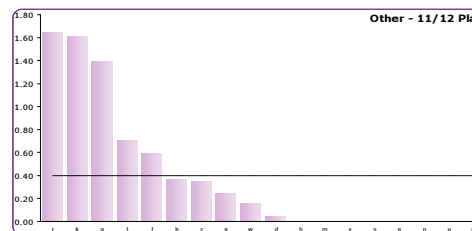
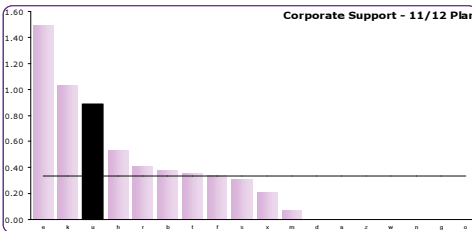
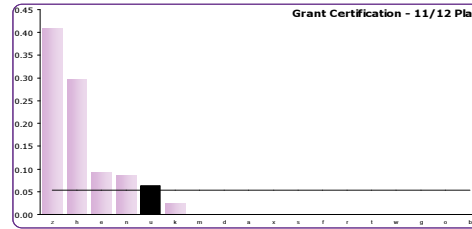
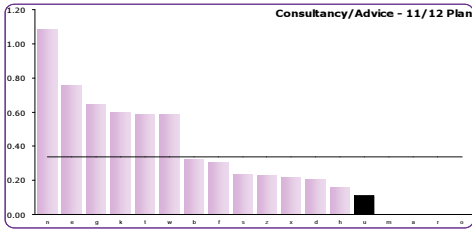
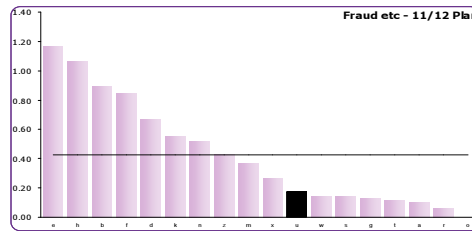
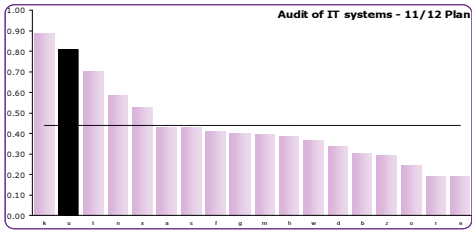
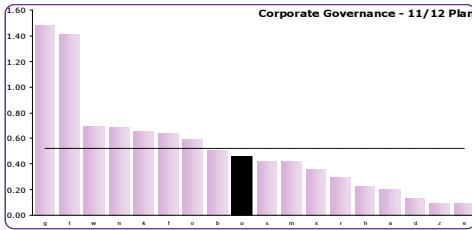
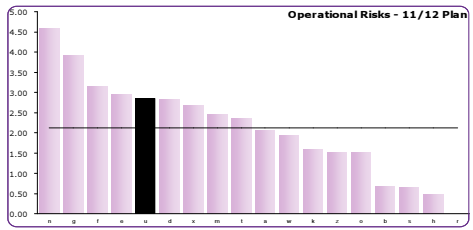
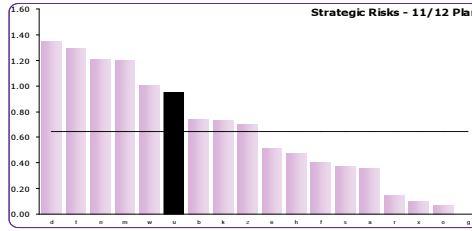
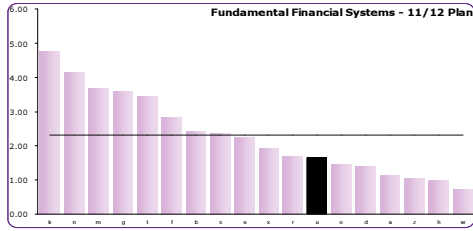
FUNDEMENTAL FINANCIAL SYSTEMS - WITH NO ADJUSTMENT FOR SIZE OF AUTHORITY



FUNDEMENTAL FINANCIAL SYSTEMS - WITH NO ADJUSTMENT FOR SIZE OF AUTHORITY

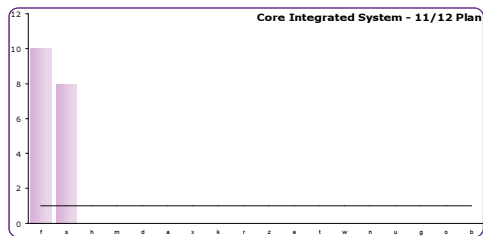
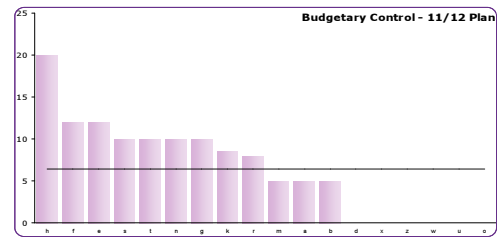
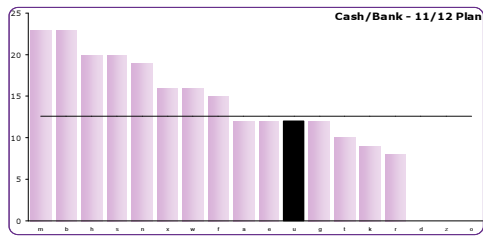
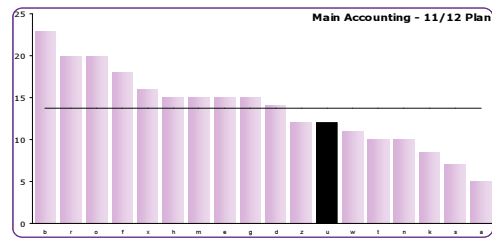
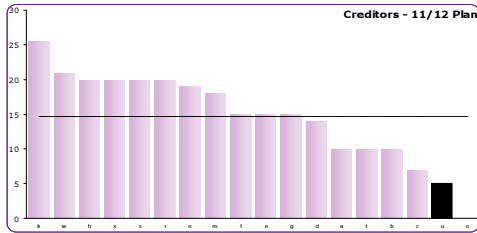
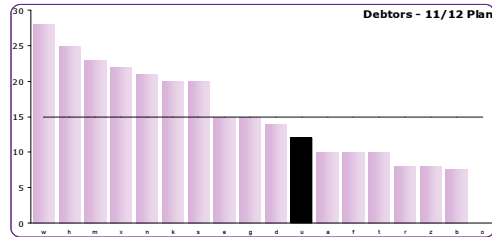
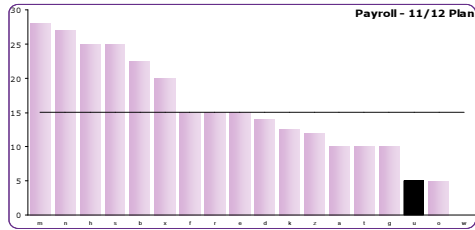


### AUDIT DAYS PER £'m 2011/12 PLAN

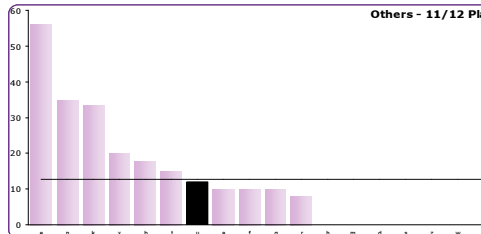
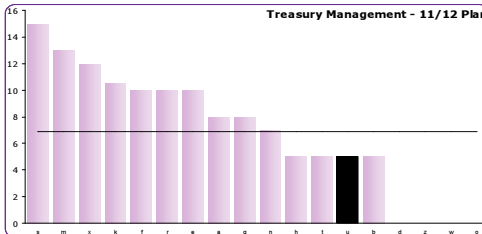
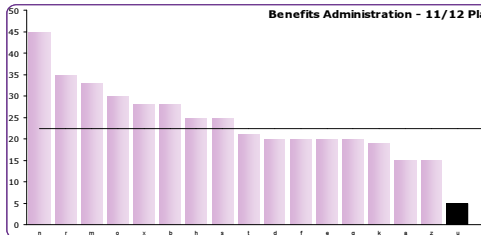
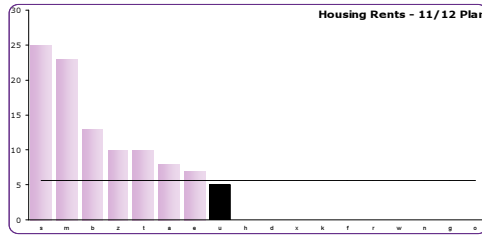
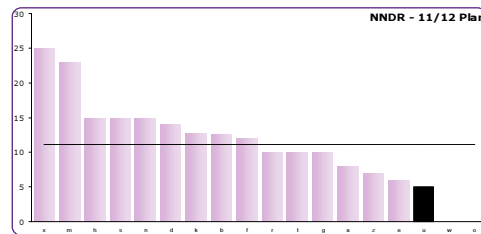
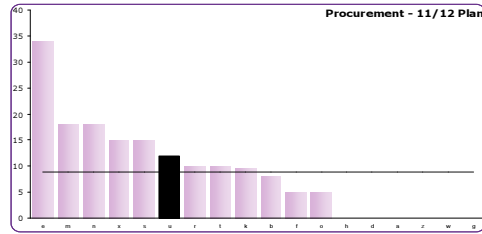
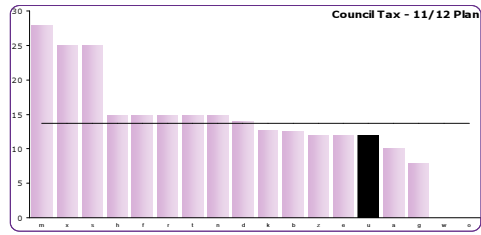
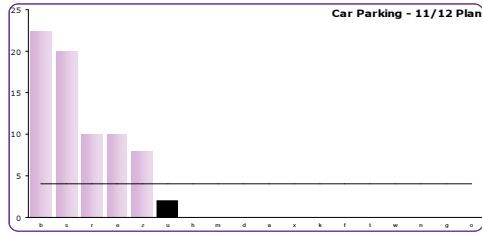




## FUNDEMENTAL FINANCIAL SYSTEMS 2011/12 PLAN

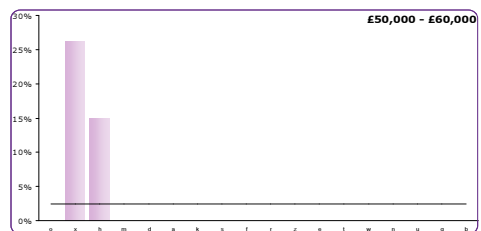
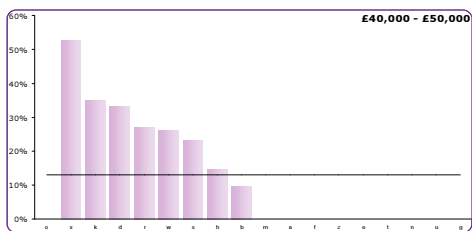
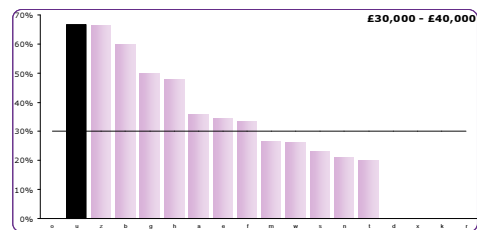
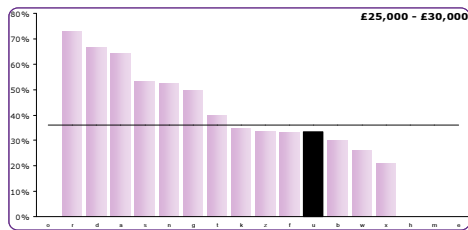
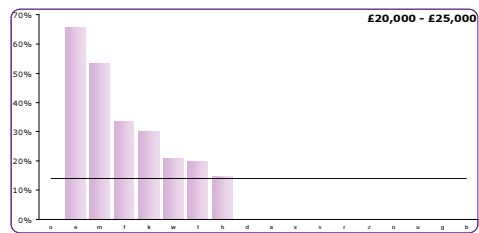
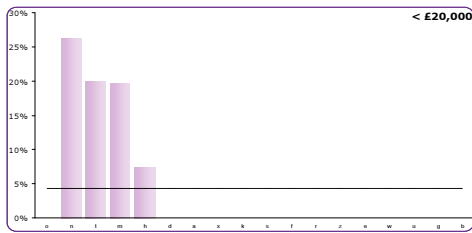


## FUNDEMENTAL FINANCIAL SYSTEMS 2011/12 PLAN



## STAFFING

### Staff salary banding at 31 March 2011



### Qualifications as at 31 March 2011

